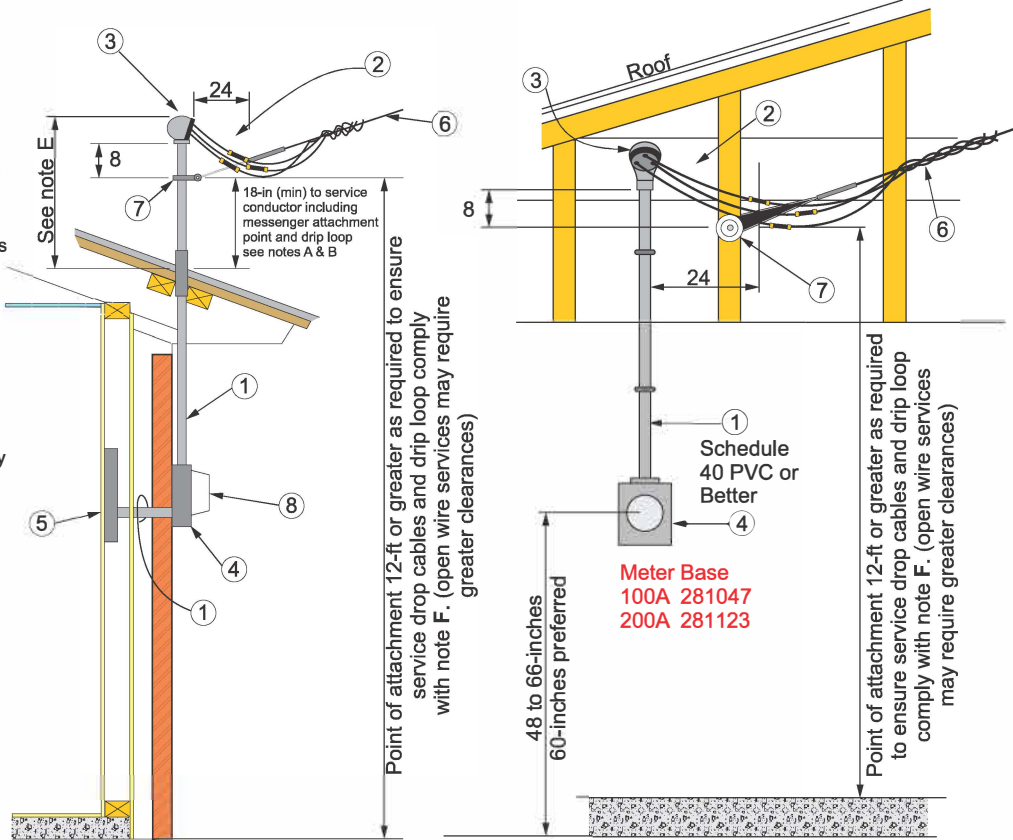


D731.1

DISTRIBUTION STANDARD
JUN 2018

Notes:

- A. Service raceway must be within 4-ft horizontally of roof edge, otherwise this dimension must be 36-in min. (applies only if roof is not readily accessible)
- B. If more than 6-ft of service drop overhangs the roof then a 36-in min distance between the service drop and the roof must be maintained for the service drop outside a 6-ft radius from the service raceway. (applies only if roof is not readily accessible)
- C. Service entrance location to be approved by OGE before setting breaker box.
- D. Steel conduit (2-in for 200 ampere or 1-1/2-in for 100 ampere) required for service entrance extending through roof.
- E. Service head not to extend more than 42-in above roof without special approval from OGE.
- F. 12-ft over areas restricted to pedestrians or other traffic less than 8-ft in height. 16-ft over areas subject to any traffic greater than 8ft. in height. For swimming pools see D262.4 or D262.6. For other situations see D262, D262.1, D262.3 or D262.5. For possible reduced clearance requirements for RESIDENTIAL SINGLE STORY buildings see NESC Table 232-1 footnotes 7 and 8.



Item no.	Description	Furnished		Installed by	
		OG&E	Consumer	OG&E	Consumer
1	Service raceway		X		X
2	Service entrance conductor		X		X
3	Service head		X		X
4	Meter base 100A (281057), 200A (281065)	X			X
5	Service equipment		X		X
6	Service Drop	X		X	
7	Service drop bracket	X			X
8	Meter	X		X	

OVERHEAD METER INSTALLATION SINGLE PHASE 200-AMPERE MAXIMUM

SUPERSEDES FEB 2007 ISSUE
 APPROVED Signatures on File

The following is a suggested configuration for meter bases for overhead and underground meters in residential and commercial applications. OGE Energy Corp., its subsidiaries and affiliates, disclaim any and all liability for the construction or maintenance practices relating to such suggested configuration. Each individual, company, or entity engaging the work associated with this configuration bears full responsibility for its, his, or her own occupational training, and compliance with all applicable local, state, and national laws and regulations. The configuration is not intended to replace the trainin know-how or instruction that ma be needed for safe construction or maintenance.